

## **Integrated Biodiversity Assessment Tool**

# **DISCLOSURE PREPARATION REPORT: SUMMARY OF RESULTS FOR TNFD/GRI (PDF 2 OF 2)**

**Number of sites:** 18

**Date of analysis:** 20 February 2026 (GMT)

**Generated by:** Megan Sim

**Organisation:** IBAT demo and training account

## **Contents**

- About this Report
- Results

## **About this Report**

The results for TNFD and GRI 101: Biodiversity 2024 are divided into 2 PDFs. This PDF (2 of 2) provides:

- Further information on sites assessed as in or near an ecologically sensitive location ordered by potential priority.
- A map of each site assessed as in or near an ecologically sensitive location, showing the Area of Influence (site + buffer) and overlap with Key Biodiversity Areas (KBAs) and protected areas.
- Information on the STAR Threat Abatement and Restoration scores for each site assessed as in or near an ecologically sensitive location.

**Important note:** The significance scores and suggested prioritisation of the sites are based on the datasets within IBAT. The significance score and prioritisation of sites would likely change if datasets outside of IBAT were included in this exercise. It is recommended that other tools and datasets should be used in conjunction with IBAT to complete a holistic sensitivity mapping.

## Results

**Site Name:** Japan STAR

**Site Area:** This site has not been assigned any area since it has a no defined boundaries. We can only calculate area when sites have Polygon geometry.

**Buffer distance:** 10 km

**Site type:** Terrestrial Oil and gas

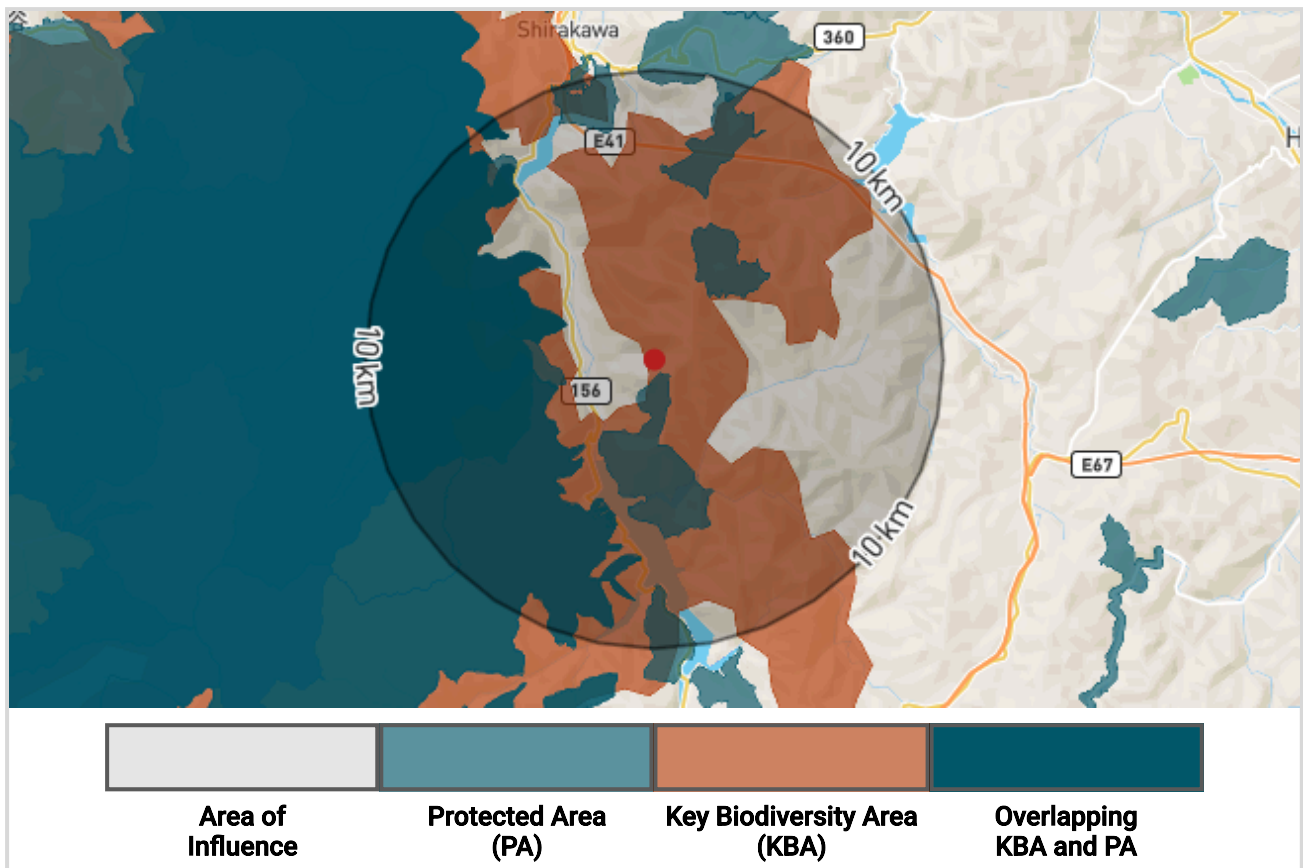
**Operation type:** Direct Operations

**In or near an ecologically sensitive location:** Yes

**Country:** Japan

**Distance to nearest Protected Area or KBA:** 0.0 km

**Area of protected areas and KBAs within the Area of Influence:** 224.53 km<sup>2</sup>



**Figure 1.** Location of Japan STAR . The Area of Influence (site and buffer) is shown in light grey. Protected areas (data from the World Database on Protected Areas) are shown in teal, Key Biodiversity Areas (data from the World Database of KBAs) are shown in dark orange, and areas where protected area and KBAs overlap are shown as the mix of both colours.

Japan STAR is identified as in or near an ecologically sensitive location in relation to protected areas and KBAs. Overall, there are a total of 13 protected areas and 1 KBA within the Area of Influence (site and buffer).

Japan STAR is identified as a sensitive site in relation to the species present due to the higher potential of species' extinction risk. The maximum STAR<sub>T</sub> and STAR<sub>R</sub> scores in the Area of Influence exceed the global

median values of 0.01 and 0.003 respectively.

**Site Name:** Brazil Carajás Mine

**Site Area:** This site has not been assigned any area since it has a no defined boundaries. We can only calculate area when sites have Polygon geometry.

**Buffer distance:** 50 km

**Site type:** Mining

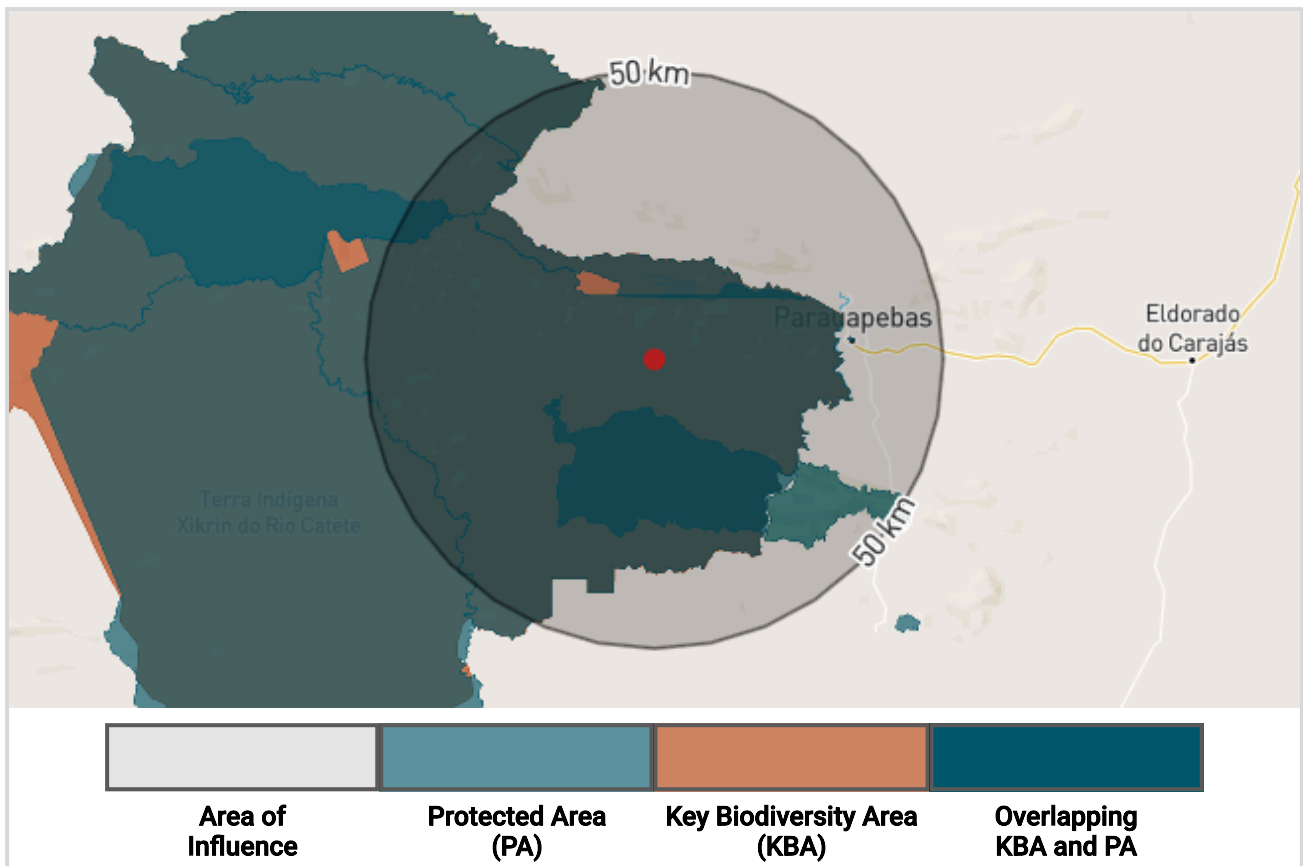
**Operation type:** Upstream

**In or near an ecologically sensitive location:** Yes

**Country:** Brazil

**Distance to nearest Protected Area or KBA:** 0.0 km

**Area of protected areas and KBAs within the Area of Influence:** 4567.38 km<sup>2</sup>



**Figure 2.** Location of Brazil Carajás Mine. The Area of Influence (site and buffer) is shown in light grey. Protected areas (data from the World Database on Protected Areas) are shown in teal, Key Biodiversity Areas (data from the World Database of KBAs) are shown in dark orange, and areas where protected area and KBAs overlap are shown as the mix of both colours.

Brazil Carajás Mine is identified as in or near an ecologically sensitive location in relation to protected areas and KBAs. Overall, there are a total of 8 protected areas and 1 KBA within the Area of Influence (site and buffer).

Brazil Carajás Mine is identified as a sensitive site in relation to the species present due to the higher potential of species' extinction risk. The maximum STAR<sub>T</sub> and STAR<sub>R</sub> scores in the Area of Influence exceed the global median values of 0.01 and 0.003 respectively.

**Site Name:** Tumut, Australia Hydropower

**Site Area:** This site has not been assigned any area since it has a no defined boundaries. We can only calculate area when sites have Polygon geometry.

**Buffer distance:** 20 km

**Site type:** Hydropower

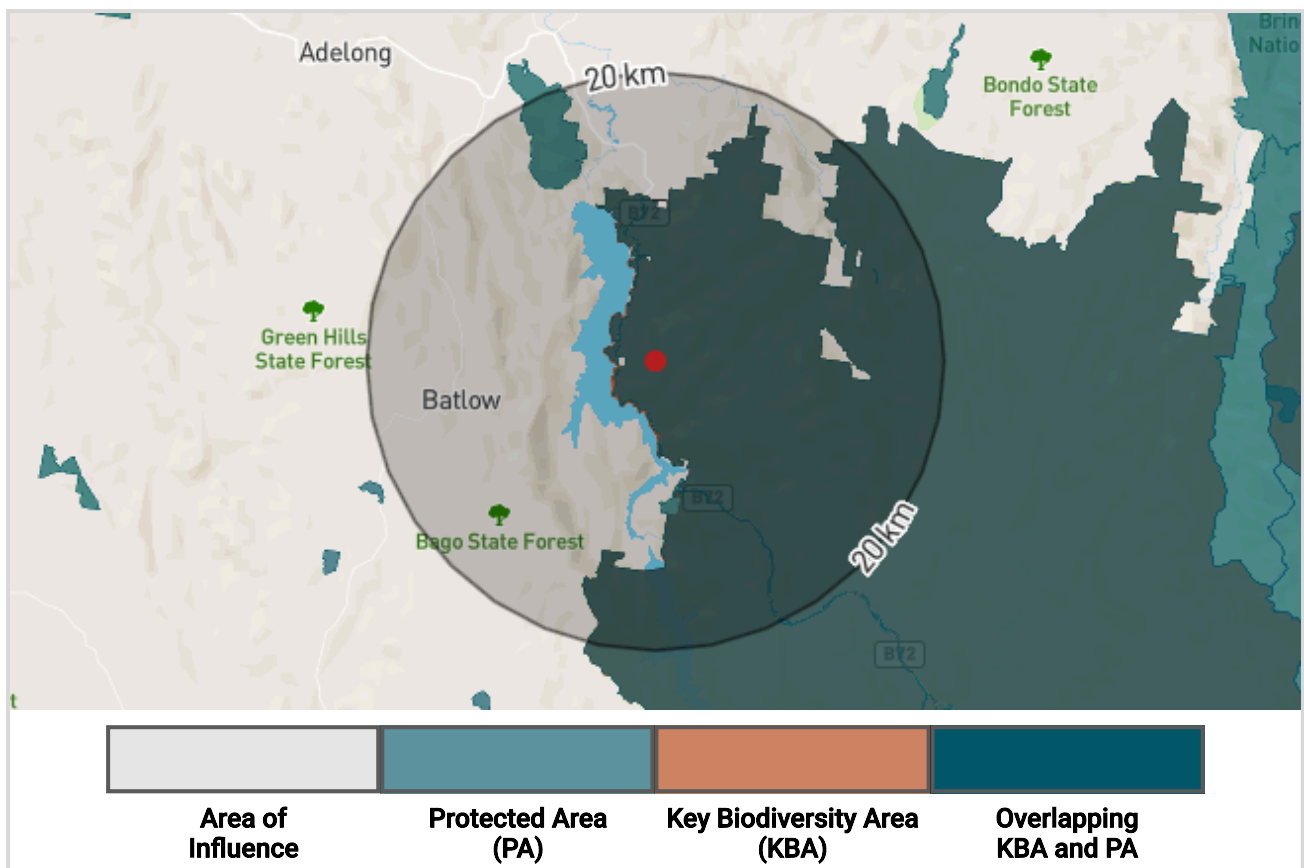
**Operation type:** Direct Operations

**In or near an ecologically sensitive location:** Yes

**Country:** Australia

**Distance to nearest Protected Area or KBA:** 0.0 km

**Area of protected areas and KBAs within the Area of Influence:** 611.76 km<sup>2</sup>



**Figure 3.** Location of Tumut, Australia Hydropower. The Area of Influence (site and buffer) is shown in light grey. Protected areas (data from the World Database on Protected Areas) are shown in teal, Key Biodiversity Areas (data from the World Database of KBAs) are shown in dark orange, and areas where protected area and KBAs overlap are shown as the mix of both colours.

Tumut, Australia Hydropower is identified as in or near an ecologically sensitive location in relation to protected areas and KBAs. Overall, there are a total of 2 protected areas and 1 KBA within the Area of Influence (site and buffer).

Tumut, Australia Hydropower is identified as a sensitive site in relation to the species present due to the higher potential of species' extinction risk. The maximum STAR<sub>T</sub> and STAR<sub>R</sub> scores in the Area of Influence exceed the global median values of 0.01 and 0.003 respectively.

**Site Name:** Gagal Cement works

**Site Area:** This site has not been assigned any area since it has no defined boundaries. We can only calculate area when sites have Polygon geometry.

**Buffer distance:** 50 km

**Site type:** 50 km Maximum Impact Buffer

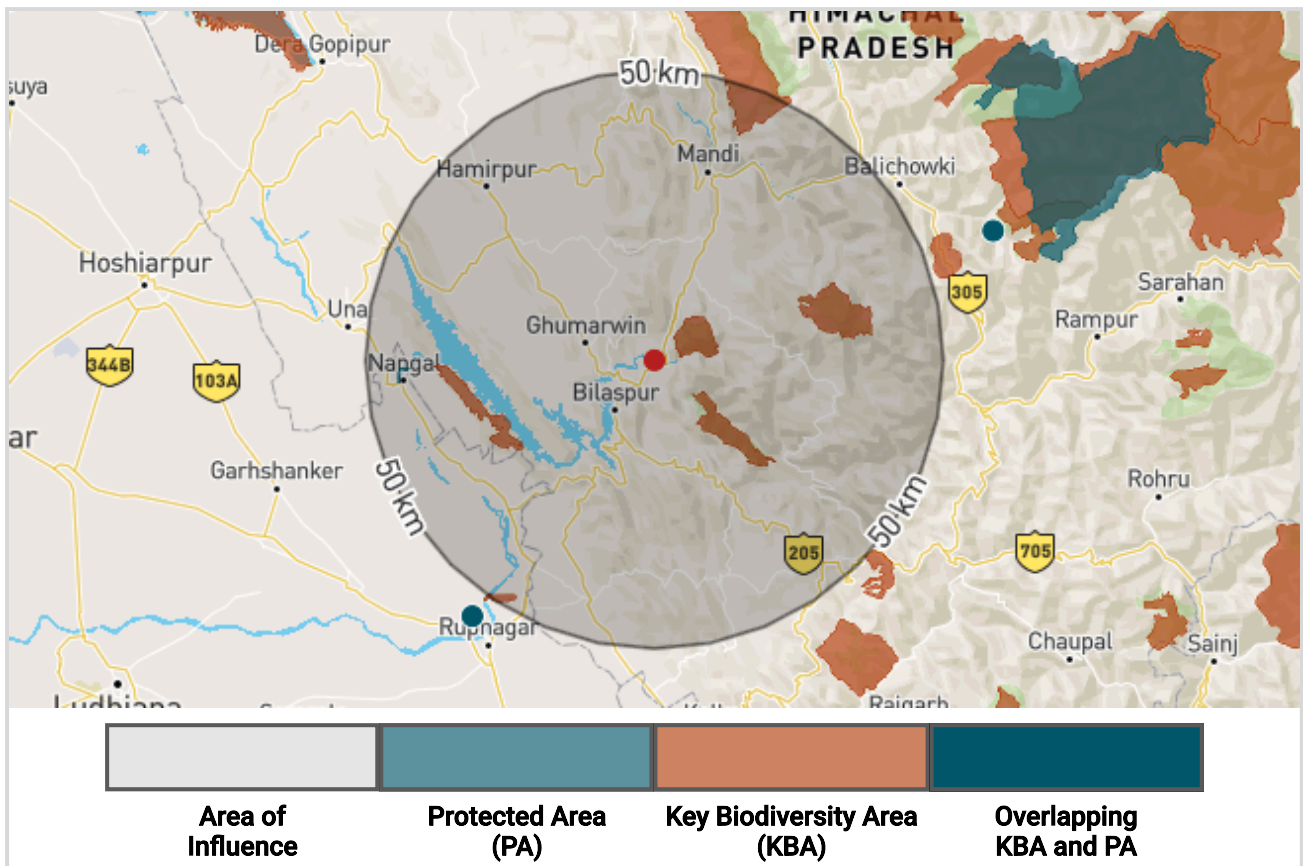
**Operation type:** Direct Operations

**In or near an ecologically sensitive location:** Yes

**Country:** India

**Distance to nearest Protected Area or KBA:** 4.14 km

**Area of protected areas and KBAs within the Area of Influence:** 250.68 km<sup>2</sup>



**Figure 4.** Location of Gagal Cement works. The Area of Influence (site and buffer) is shown in light grey. Protected areas (data from the World Database on Protected Areas) are shown in teal, Key Biodiversity Areas (data from the World Database of KBAs) are shown in dark orange, and areas where protected area and KBAs overlap are shown as the mix of both colours.

Gagal Cement works is identified as in or near an ecologically sensitive location in relation to protected areas and KBAs. Overall, there is a total of one protected area and 7 KBAs within the Area of Influence (site and buffer).

Gagal Cement works is identified as a sensitive site in relation to the species present due to the higher potential of species' extinction risk. The maximum STAR<sub>T</sub> and STAR<sub>R</sub> scores in the Area of Influence exceed the global median values of 0.01 and 0.003 respectively.

**Site Name:** West Mining Exploration

**Site Area:** 2.33 km<sup>2</sup>

**Buffer distance:** 50 km

**Site type:** Mining

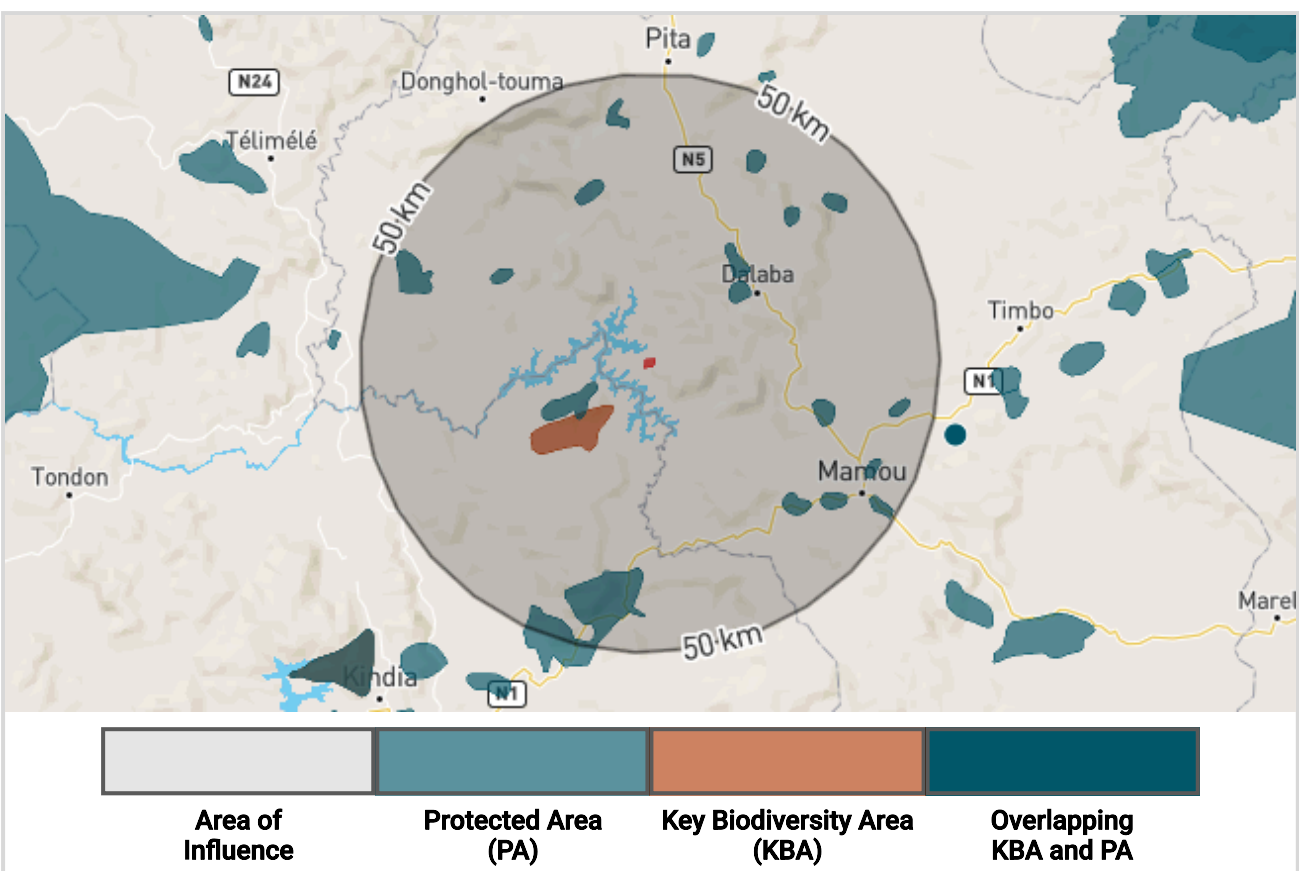
**Operation type:** Upstream

**In or near an ecologically sensitive location:** Yes

**Country:** Guinea

**Distance to nearest Protected Area or KBA:** 8.74 km

**Area of protected areas and KBAs within the Area of Influence:** 412.44 km<sup>2</sup>



**Figure 5.** Location of West Mining Exploration. The Area of Influence (site and buffer) is shown in light grey. Protected areas (data from the World Database on Protected Areas) are shown in teal, Key Biodiversity Areas (data from the World Database of KBAs) are shown in dark orange, and areas where protected area and KBAs overlap are shown as the mix of both colours.

West Mining Exploration is identified as in or near an ecologically sensitive location in relation to protected areas and KBAs. Overall, there are a total of 18 protected areas and 1 KBA within the Area of Influence (site and buffer).

**Important note:** There is at least one sensitive site near the Area of Influence which has undefined boundaries, due to data on the precise borders not being provided to the IBAT Alliance partners. These sensitive sites are not taken into account when calculating the overlap area, and therefore the exact overlap may be higher than the value provided.

West Mining Exploration is identified as a sensitive site in relation to the species present due to the higher potential of species' extinction risk. The maximum  $STAR_T$  and  $STAR_R$  scores in the Area of Influence exceed the global median values of 0.01 and 0.003 respectively.



**Site Name:** Niigata, Oil & Gas Field

**Site Area:** This site has not been assigned any area since it has no defined boundaries. We can only calculate area when sites have Polygon geometry.

**Buffer distance:** 20 km

**Site type:** Marine Oil and gas

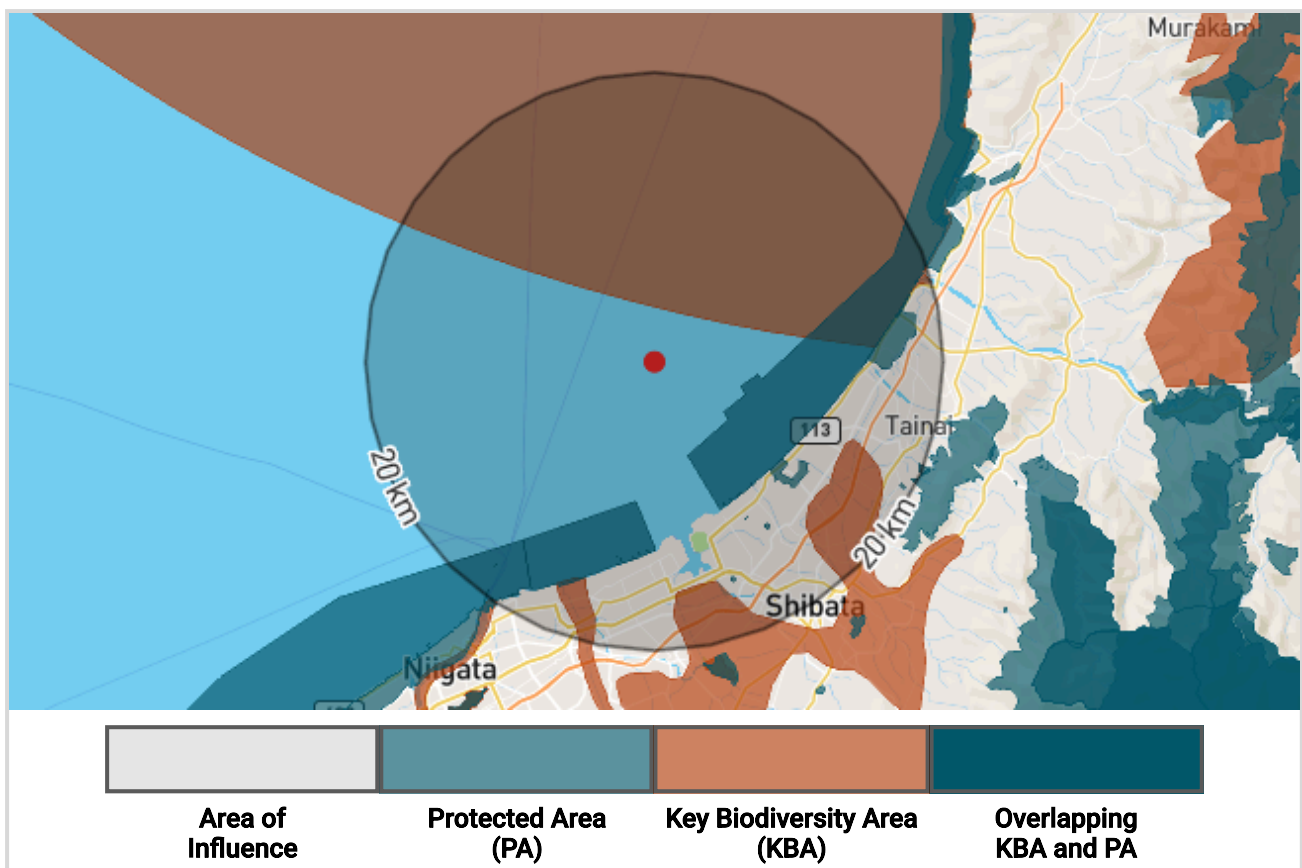
**Operation type:** Direct Operations

**In or near an ecologically sensitive location:** Yes

**Country:** Japan

**Distance to nearest Protected Area or KBA:** 3.68 km

**Area of protected areas and KBAs within the Area of Influence:** 625.67 km<sup>2</sup>



**Figure 6.** Location of Niigata, Oil & Gas Field. The Area of Influence (site and buffer) is shown in light grey. Protected areas (data from the World Database on Protected Areas) are shown in teal, Key Biodiversity Areas (data from the World Database of KBAs) are shown in dark orange, and areas where protected area and KBAs overlap are shown as the mix of both colours.

Niigata, Oil & Gas Field is identified as in or near an ecologically sensitive location in relation to protected areas and KBAs. Overall, there are a total of 11 protected areas and 4 KBAs within the Area of Influence (site and buffer).

Niigata, Oil & Gas Field is identified as a sensitive site in relation to the species present due to the higher potential of species' extinction risk. The maximum STAR<sub>T</sub> and STAR<sub>R</sub> scores in the Area of Influence exceed the global median values of 0.01 and 0.003 respectively.

**Site Name:** O&G Exploration

**Site Area:** 34.27 km<sup>2</sup>

**Buffer distance:** 10 km

**Site type:** Terrestrial Oil and gas

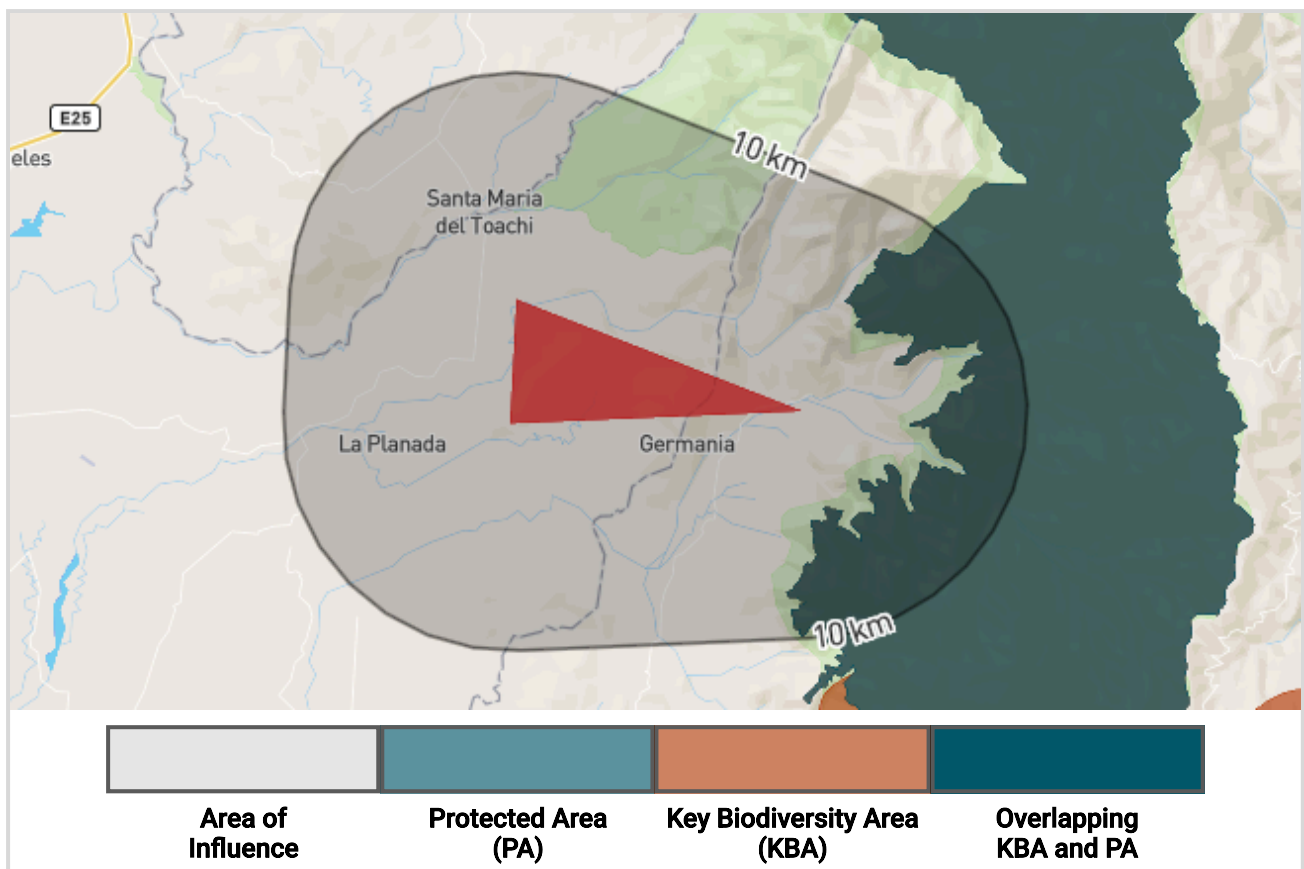
**Operation type:** Direct Operations

**In or near an ecologically sensitive location:** Yes

**Country:** Ecuador

**Distance to nearest Protected Area or KBA:** 3.97 km

**Area of protected areas and KBAs within the Area of Influence:** 86.16 km<sup>2</sup>



**Figure 7.** Location of O&G Exploration . The Area of Influence (site and buffer) is shown in light grey. Protected areas (data from the World Database on Protected Areas) are shown in teal, Key Biodiversity Areas (data from the World Database of KBAs) are shown in dark orange, and areas where protected area and KBAs overlap are shown as the mix of both colours.

O&G Exploration is identified as in or near an ecologically sensitive location in relation to protected areas and KBAs. Overall, there is a total of one protected area and 1 KBA within the Area of Influence (site and buffer).

O&G Exploration is identified as a sensitive site in relation to the species present due to the higher potential of species' extinction risk. The maximum STAR<sub>T</sub> and STAR<sub>R</sub> scores in the Area of Influence exceed the global median values of 0.01 and 0.003 respectively.

**Site Name:** Seoul HQ office

**Site Area:** This site has not been assigned any area since it has a no defined boundaries. We can only calculate area when sites have Polygon geometry.

**Buffer distance:** 5 km

**Site type:** Offices

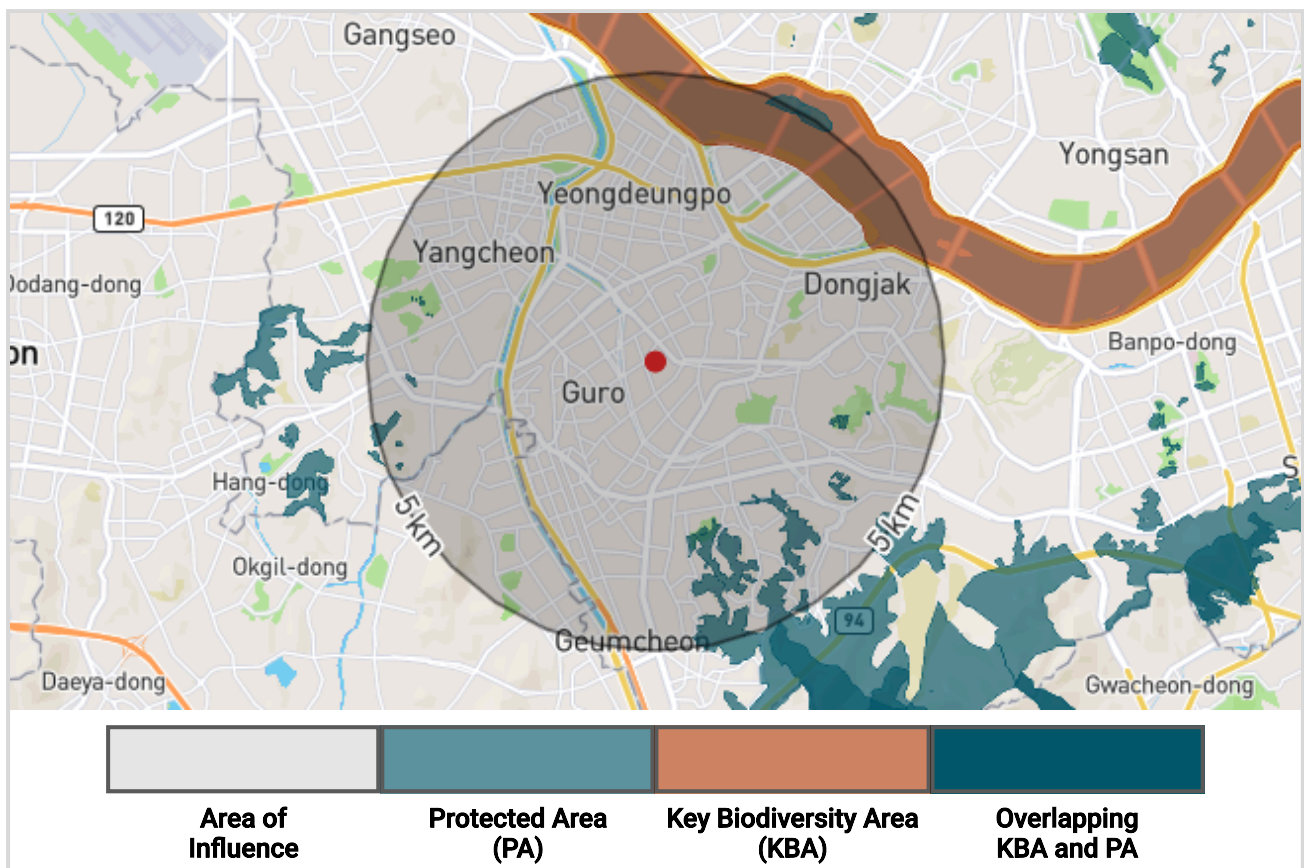
**Operation type:** Direct Operations

**In or near an ecologically sensitive location:** Yes

**Country:** Republic of Korea

**Distance to nearest Protected Area or KBA:** 2.85 km

**Area of protected areas and KBAs within the Area of Influence:** 7.13 km<sup>2</sup>



**Figure 8.** Location of Seoul HQ office. The Area of Influence (site and buffer) is shown in light grey. Protected areas (data from the World Database on Protected Areas) are shown in teal, Key Biodiversity Areas (data from the World Database of KBAs) are shown in dark orange, and areas where protected area and KBAs overlap are shown as the mix of both colours.

Seoul HQ office is identified as in or near an ecologically sensitive location in relation to protected areas and KBAs. Overall, there are a total of 4 protected areas and 1 KBA within the Area of Influence (site and buffer).

Seoul HQ office is identified as a sensitive site in relation to the species present due to the higher potential of species' extinction risk. The maximum STAR<sub>R</sub> score in the Area of Influence exceeds the global median value of 0.003.

**Site Name:** Wind Energy Exploration - CA

**Site Area:** This site has not been assigned any area since it has no defined boundaries. We can only calculate area when sites have Polygon geometry.

**Buffer distance:** 10 km

**Site type:** Onshore wind

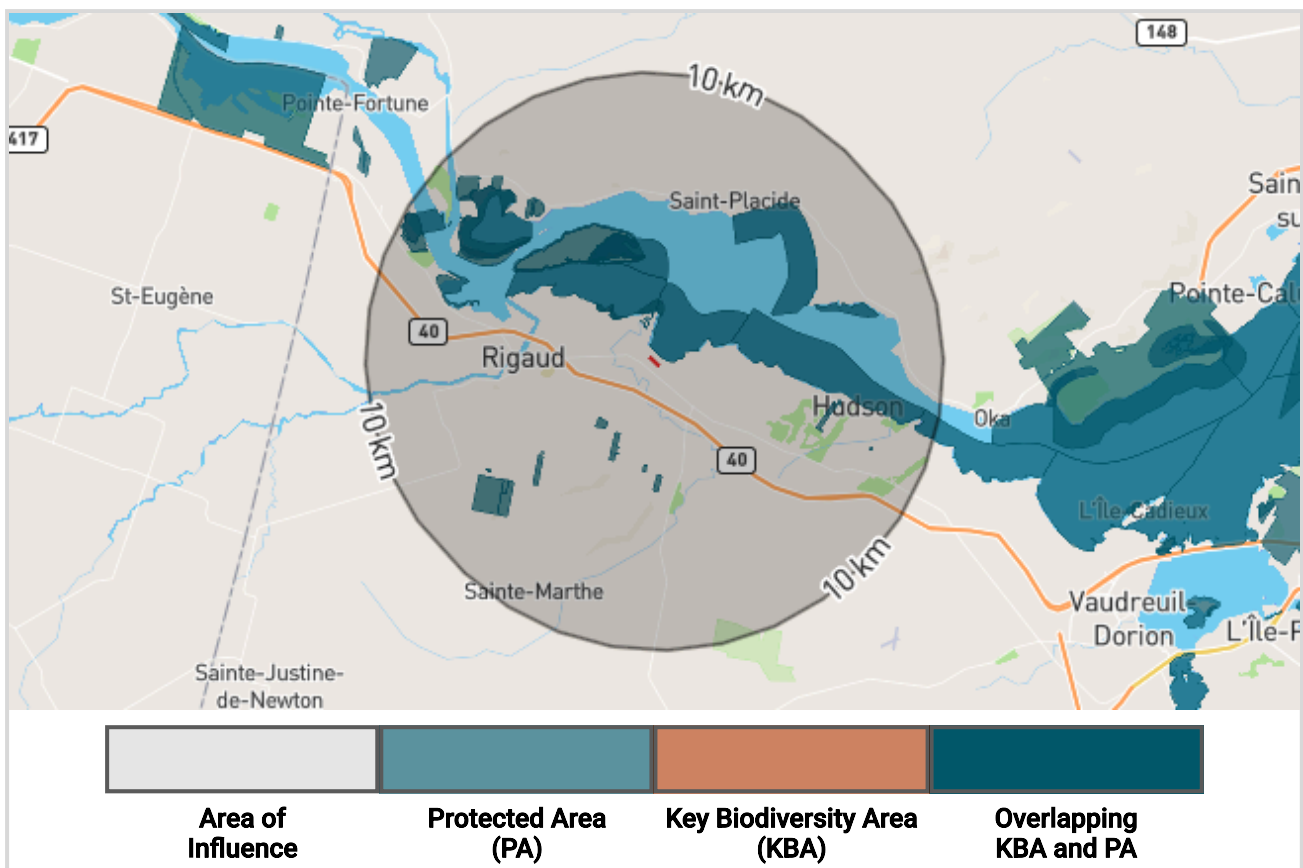
**Operation type:** Direct Operations

**In or near an ecologically sensitive location:** Yes

**Country:** Canada

**Distance to nearest Protected Area or KBA:** 0.25 km

**Area of protected areas and KBAs within the Area of Influence:** 42.65 km<sup>2</sup>



**Figure 9.** Location of Wind Energy Exploration - CA. The Area of Influence (site and buffer) is shown in light grey. Protected areas (data from the World Database on Protected Areas) are shown in teal, Key Biodiversity Areas (data from the World Database of KBAs) are shown in dark orange, and areas where protected area and KBAs overlap are shown as the mix of both colours.

Wind Energy Exploration - CA is identified as in or near an ecologically sensitive location in relation to protected areas and KBAs. Overall, there are a total of 37 protected areas and 0 KBAs within the Area of Influence (site and buffer).

Wind Energy Exploration - CA is identified as a sensitive site in relation to the species present due to the higher potential of species' extinction risk. The maximum STAR<sub>T</sub> and STAR<sub>R</sub> scores in the Area of Influence exceed the global median values of 0.01 and 0.003 respectively.

**Site Name:** Sandakan, Malaysia Palm Oil

**Site Area:** This site has not been assigned any area since it has no defined boundaries. We can only calculate area when sites have Polygon geometry.

**Buffer distance:** 10 km

**Site type:** High-input agriculture

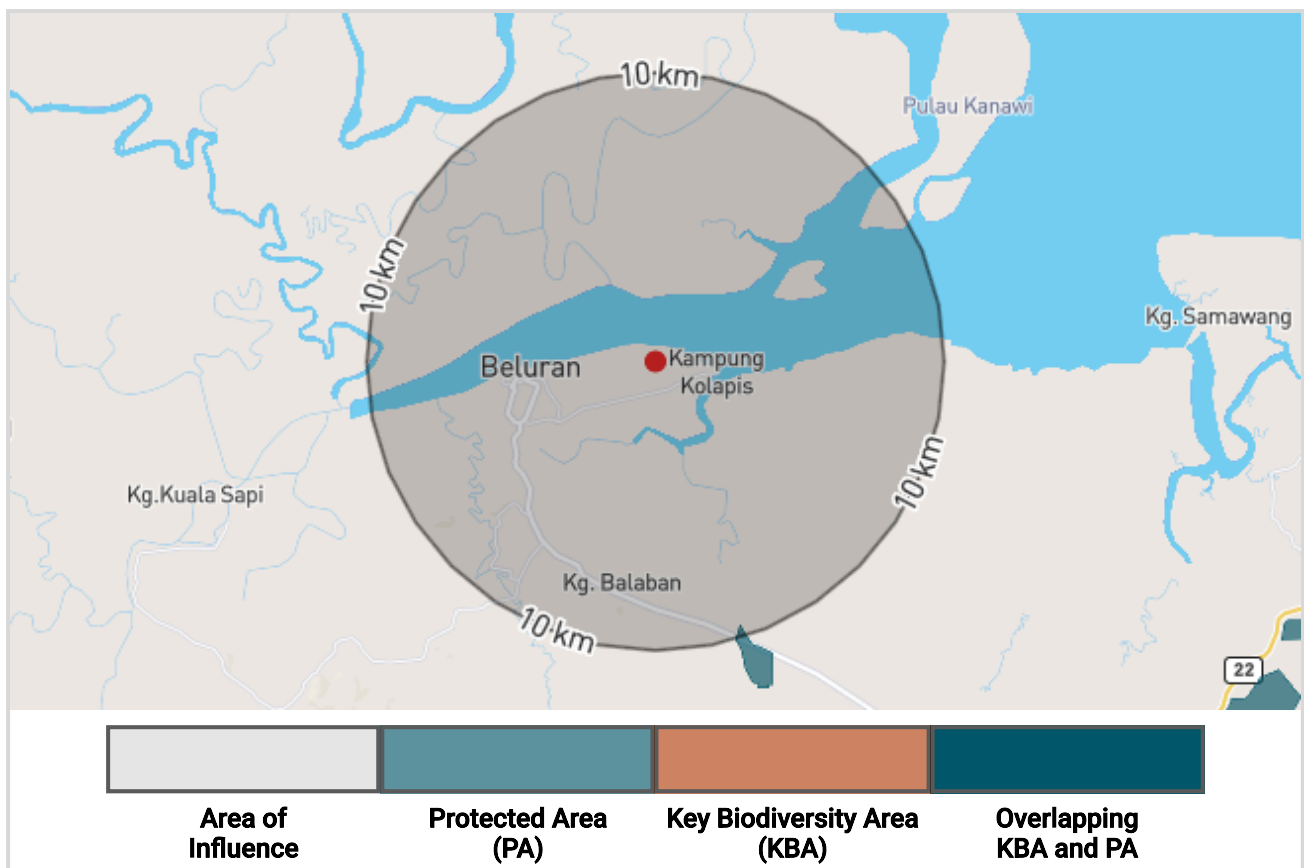
**Operation type:** Upstream

**In or near an ecologically sensitive location:** Yes

**Country:** Malaysia

**Distance to nearest Protected Area or KBA:** 9.55 km

**Area of protected areas and KBAs within the Area of Influence:** 0.1 km<sup>2</sup>



**Figure 10.** Location of Sandakan, Malaysia Palm Oil. The Area of Influence (site and buffer) is shown in light grey. Protected areas (data from the World Database on Protected Areas) are shown in teal, Key Biodiversity Areas (data from the World Database of KBAs) are shown in dark orange, and areas where protected area and KBAs overlap are shown as the mix of both colours.

Sandakan, Malaysia Palm Oil is identified as in or near an ecologically sensitive location in relation to protected areas and KBAs. Overall, there is a total of one protected area and 0 KBAs within the Area of Influence (site and buffer).

Sandakan, Malaysia Palm Oil is identified as a sensitive site in relation to the species present due to the higher potential of species' extinction risk. The maximum STAR<sub>T</sub> and STAR<sub>R</sub> scores in the Area of Influence exceed the global median values of 0.01 and 0.003 respectively.



**Site Name:** Florida, US, Innovation Center

**Site Area:** This site has not been assigned any area since it has no defined boundaries. We can only calculate area when sites have Polygon geometry.

**Buffer distance:** 5 km

**Site type:** Warehouses

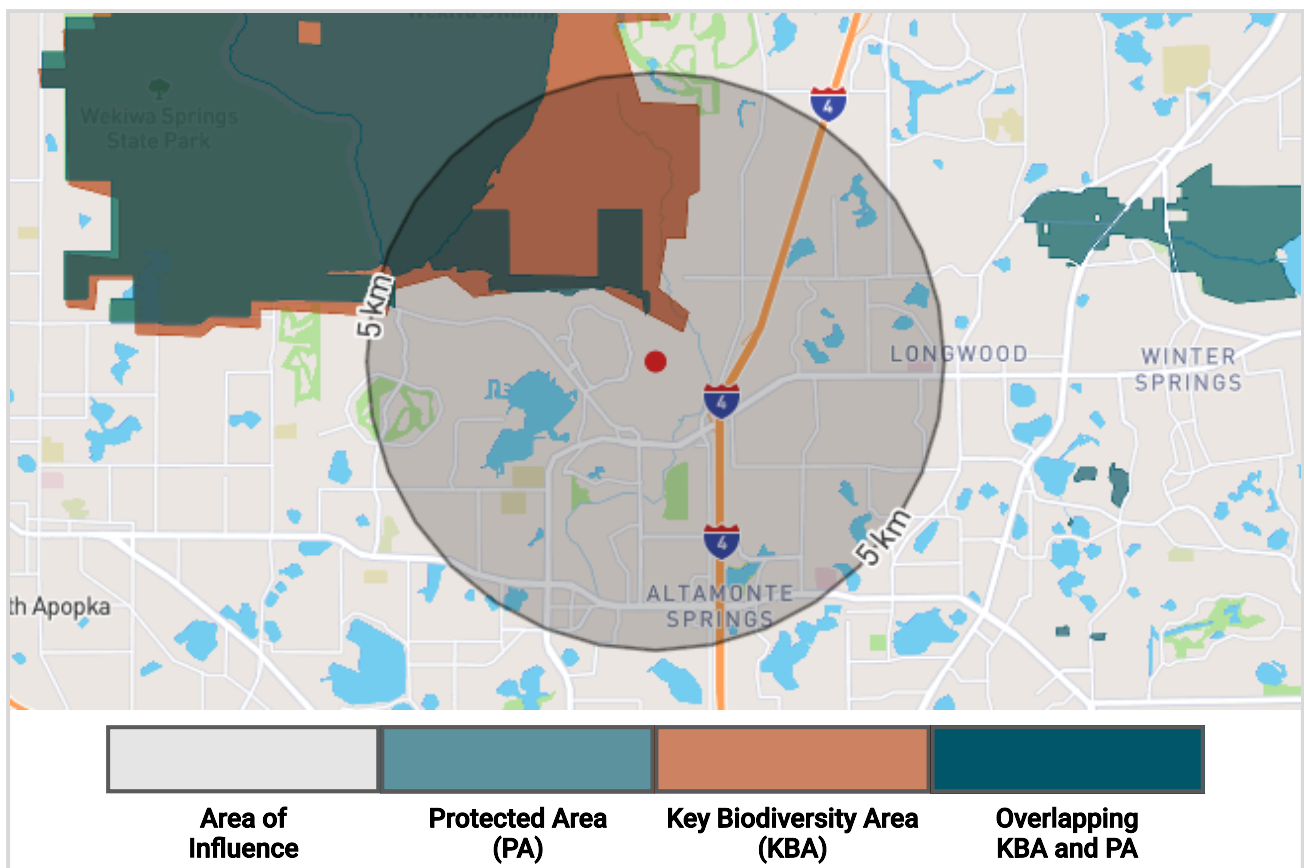
**Operation type:** Upstream

**In or near an ecologically sensitive location:** Yes

**Country:** United States of America

**Distance to nearest Protected Area or KBA:** 0.67 km

**Area of protected areas and KBAs within the Area of Influence:** 15.53 km<sup>2</sup>



**Figure 11.** Location of Florida, US, Innovation Center. The Area of Influence (site and buffer) is shown in light grey. Protected areas (data from the World Database on Protected Areas) are shown in teal, Key Biodiversity Areas (data from the World Database of KBAs) are shown in dark orange, and areas where protected area and KBAs overlap are shown as the mix of both colours.

Florida, US, Innovation Center is identified as in or near an ecologically sensitive location in relation to protected areas and KBAs. Overall, there are a total of 3 protected areas and 1 KBA within the Area of Influence (site and buffer).

Florida, US, Innovation Center is identified as a sensitive site in relation to the species present due to the higher potential of species' extinction risk. The maximum STAR<sub>T</sub> and STAR<sub>R</sub> scores in the Area of Influence exceed the global median values of 0.01 and 0.003 respectively.

**Site Name:** Mumbai, India Logistics Warehouse

**Site Area:** This site has not been assigned any area since it has no defined boundaries. We can only calculate area when sites have Polygon geometry.

**Buffer distance:** 5 km

**Site type:** Warehouses

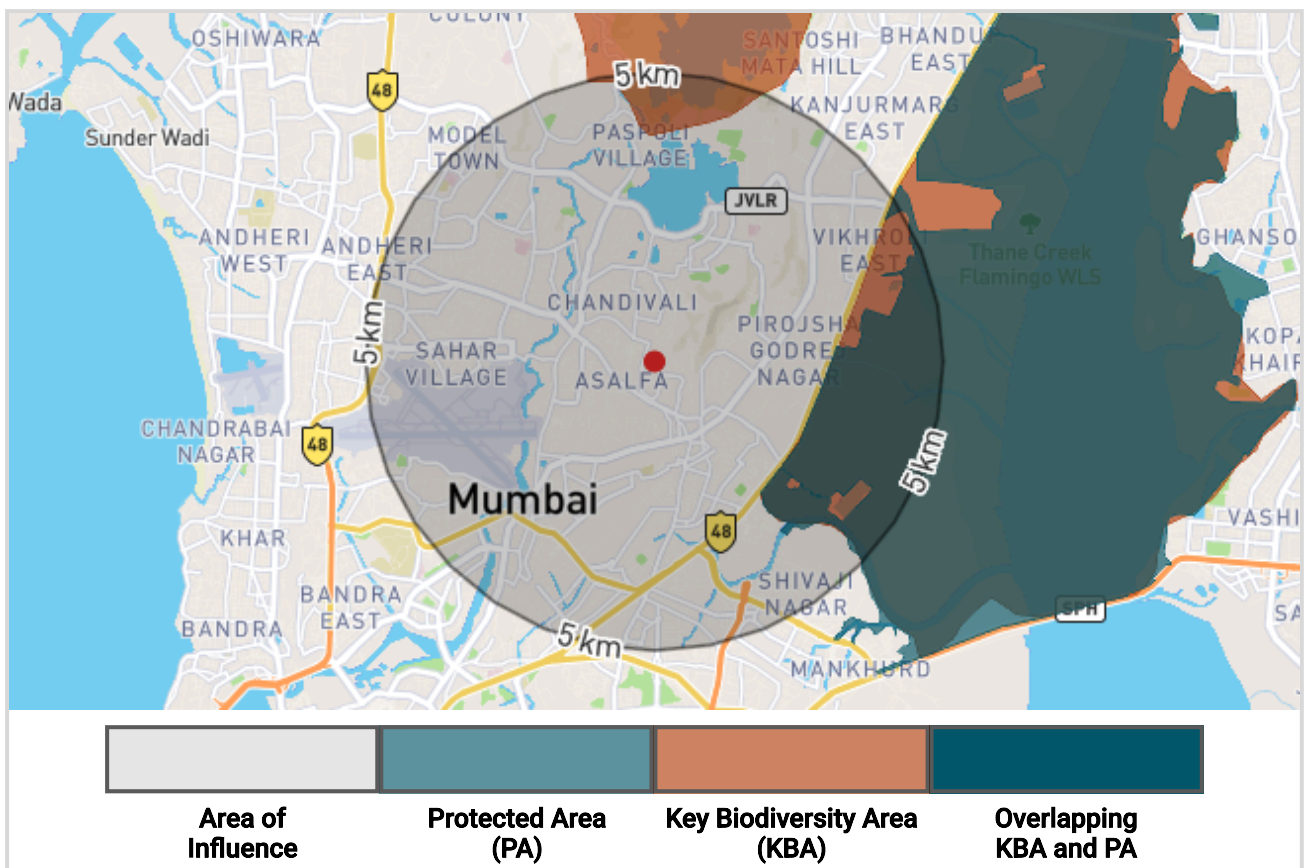
**Operation type:** Downstream

**In or near an ecologically sensitive location:** Yes

**Country:** India

**Distance to nearest Protected Area or KBA:** 2.84 km

**Area of protected areas and KBAs within the Area of Influence:** 11.69 km<sup>2</sup>



**Figure 12.** Location of Mumbai, India Logistics Warehouse. The Area of Influence (site and buffer) is shown in light grey. Protected areas (data from the World Database on Protected Areas) are shown in teal, Key Biodiversity Areas (data from the World Database of KBAs) are shown in dark orange, and areas where protected area and KBAs overlap are shown as the mix of both colours.

Mumbai, India Logistics Warehouse is identified as in or near an ecologically sensitive location in relation to protected areas and KBAs. Overall, there is a total of one protected area and 2 KBAs within the Area of Influence (site and buffer).

Mumbai, India Logistics Warehouse is identified as a sensitive site in relation to the species present due to the higher potential of species' extinction risk. The maximum STAR<sub>R</sub> score in the Area of Influence exceeds the global median value of 0.003.

**Site Name:** Germany Wind Energy Exploration

**Site Area:** This site has not been assigned any area since it has a no defined boundaries. We can only calculate area when sites have Polygon geometry.

**Buffer distance:** 10 km

**Site type:** Onshore wind

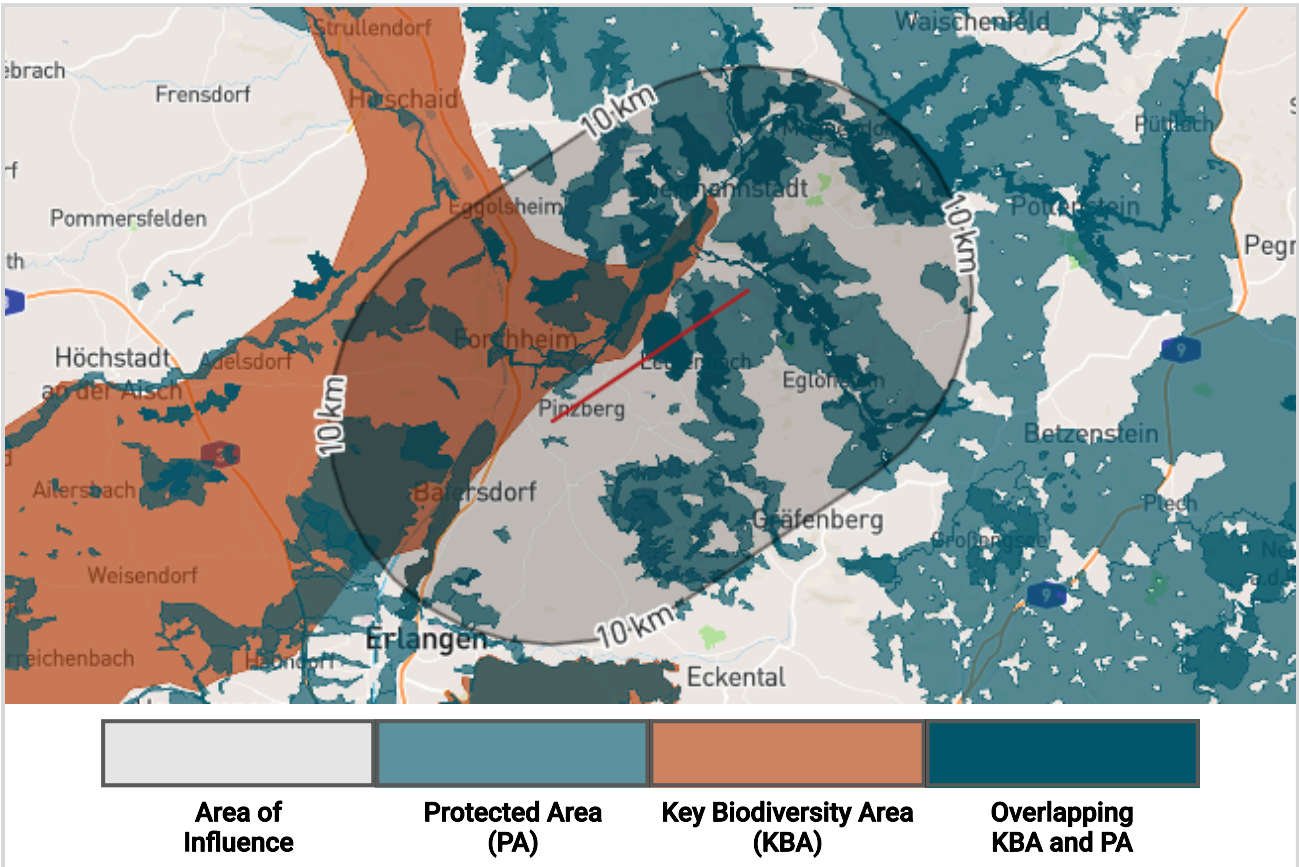
**Operation type:** Upstream

**In or near an ecologically sensitive location:** Yes

**Country:** Germany

**Distance to nearest Protected Area or KBA:** 0.0 km

**Area of protected areas and KBAs within the Area of Influence:** 326.1 km<sup>2</sup>



**Figure 13.** Location of Germany Wind Energy Exploration . The Area of Influence (site and buffer) is shown in light grey. Protected areas (data from the World Database on Protected Areas) are shown in teal, Key Biodiversity Areas (data from the World Database of KBAs) are shown in dark orange, and areas where protected area and KBAs overlap are shown as the mix of both colours.

Germany Wind Energy Exploration is identified as in or near an ecologically sensitive location in relation to protected areas and KBAs. Overall, there are a total of 34 protected areas and 1 KBA within the Area of Influence (site and buffer).

Germany Wind Energy Exploration is not identified as a sensitive site for areas of biodiversity and conservation importance in relation to potential of species' extinction risk as the STAR scores for threat abatement and restoration are not above the threshold (global median/80th percentile).



**Site Name:** EU Office HQ

**Site Area:** This site has not been assigned any area since it has no defined boundaries. We can only calculate area when sites have Polygon geometry.

**Buffer distance:** 5 km

**Site type:** Offices

**Operation type:** Direct Operations

**In or near an ecologically sensitive location:** Yes

**Country:** Spain

**Distance to nearest Protected Area or KBA:** Not applicable

**Area of protected areas and KBAs within the Area of Influence:** 0.0 km<sup>2</sup>



**Figure 14.** Location of EU Office HQ. The Area of Influence (site and buffer) is shown in light grey. Protected areas (data from the World Database on Protected Areas) are shown in teal, Key Biodiversity Areas (data from the World Database of KBAs) are shown in dark orange, and areas where protected area and KBAs overlap are shown as the mix of both colours.

EU Office HQ is not identified as a sensitive site for areas of biodiversity and conservation importance in relation to protected areas and KBAs as none were observed to overlap with the buffered site.

EU Office HQ is identified as a sensitive site in relation to the species present due to the higher potential of species' extinction risk. The maximum STAR<sub>T</sub> and STAR<sub>R</sub> scores in the Area of Influence exceed the global median values of 0.01 and 0.003 respectively.

**Site Name:** Rayong, Thailand Port

**Site Area:** This site has not been assigned any area since it has no defined boundaries. We can only calculate area when sites have Polygon geometry.

**Buffer distance:** 10 km

**Site type:** Construction

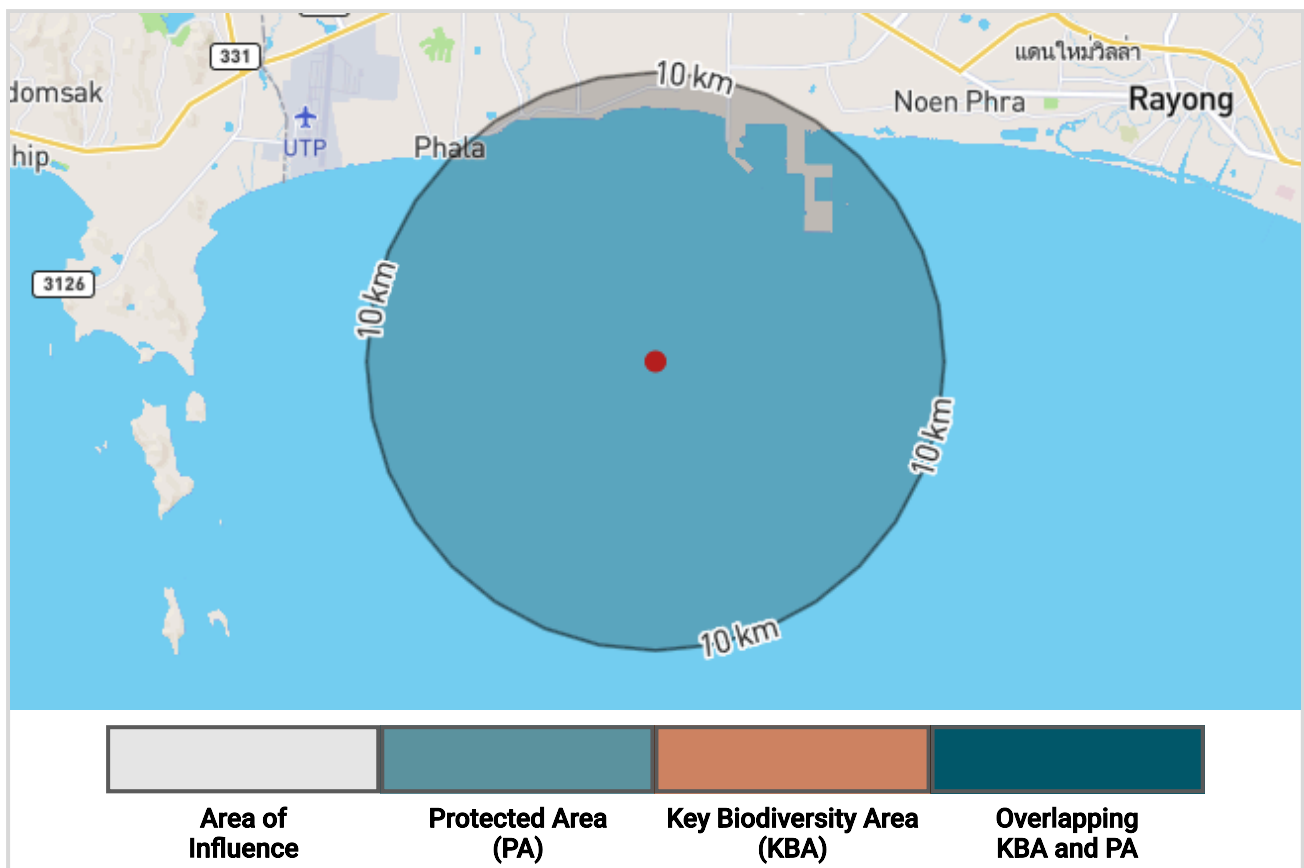
**Operation type:** Upstream

**In or near an ecologically sensitive location:** Yes

**Country:** Thailand

**Distance to nearest Protected Area or KBA:** Not applicable

**Area of protected areas and KBAs within the Area of Influence:** 0.0 km<sup>2</sup>



**Figure 15.** Location of Rayong, Thailand Port. The Area of Influence (site and buffer) is shown in light grey. Protected areas (data from the World Database on Protected Areas) are shown in teal, Key Biodiversity Areas (data from the World Database of KBAs) are shown in dark orange, and areas where protected area and KBAs overlap are shown as the mix of both colours.

Rayong, Thailand Port is not identified as a sensitive site for areas of biodiversity and conservation importance in relation to protected areas and KBAs as none were observed to overlap with the buffered site.

Rayong, Thailand Port is identified as a sensitive site in relation to the species present due to the higher potential of species' extinction risk. The maximum STAR<sub>R</sub> score in the Area of Influence exceeds the global median value of 0.003.

**Site Name:** Hornsea, UK Offshore Wind

**Site Area:** This site has not been assigned any area since it has no defined boundaries. We can only calculate area when sites have Polygon geometry.

**Buffer distance:** 20 km

**Site type:** Offshore wind

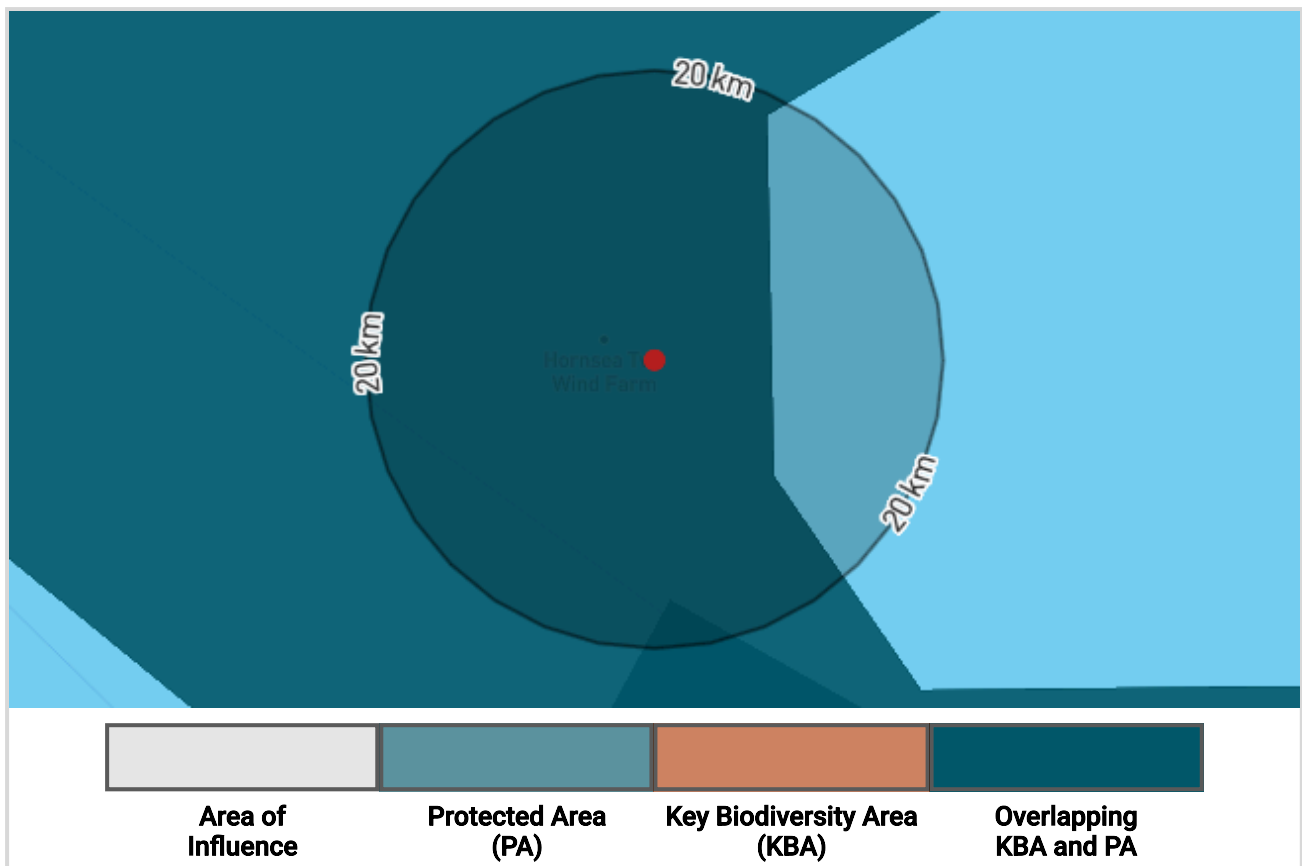
**Operation type:** Downstream

**In or near an ecologically sensitive location:** Yes

**Country:** United Kingdom

**Distance to nearest Protected Area or KBA:** 0.0 km

**Area of protected areas and KBAs within the Area of Influence:** 968.44 km<sup>2</sup>



**Figure 16.** Location of Hornsea, UK Offshore Wind. The Area of Influence (site and buffer) is shown in light grey. Protected areas (data from the World Database on Protected Areas) are shown in teal, Key Biodiversity Areas (data from the World Database of KBAs) are shown in dark orange, and areas where protected area and KBAs overlap are shown as the mix of both colours.

Hornsea, UK Offshore Wind is identified as in or near an ecologically sensitive location in relation to protected areas and KBAs. Overall, there are a total of 4 protected areas and 0 KBAs within the Area of Influence (site and buffer).

Hornsea, UK Offshore Wind is not identified as a sensitive site for areas of biodiversity and conservation importance in relation to potential of species' extinction risk as the STAR scores for threat abatement and restoration are not above the threshold (global median/80th percentile).

**Site Name:** Dubai, UAE O&G Field

**Site Area:** This site has not been assigned any area since it has no defined boundaries. We can only calculate area when sites have Polygon geometry.

**Buffer distance:** 10 km

**Site type:** Terrestrial Oil and gas

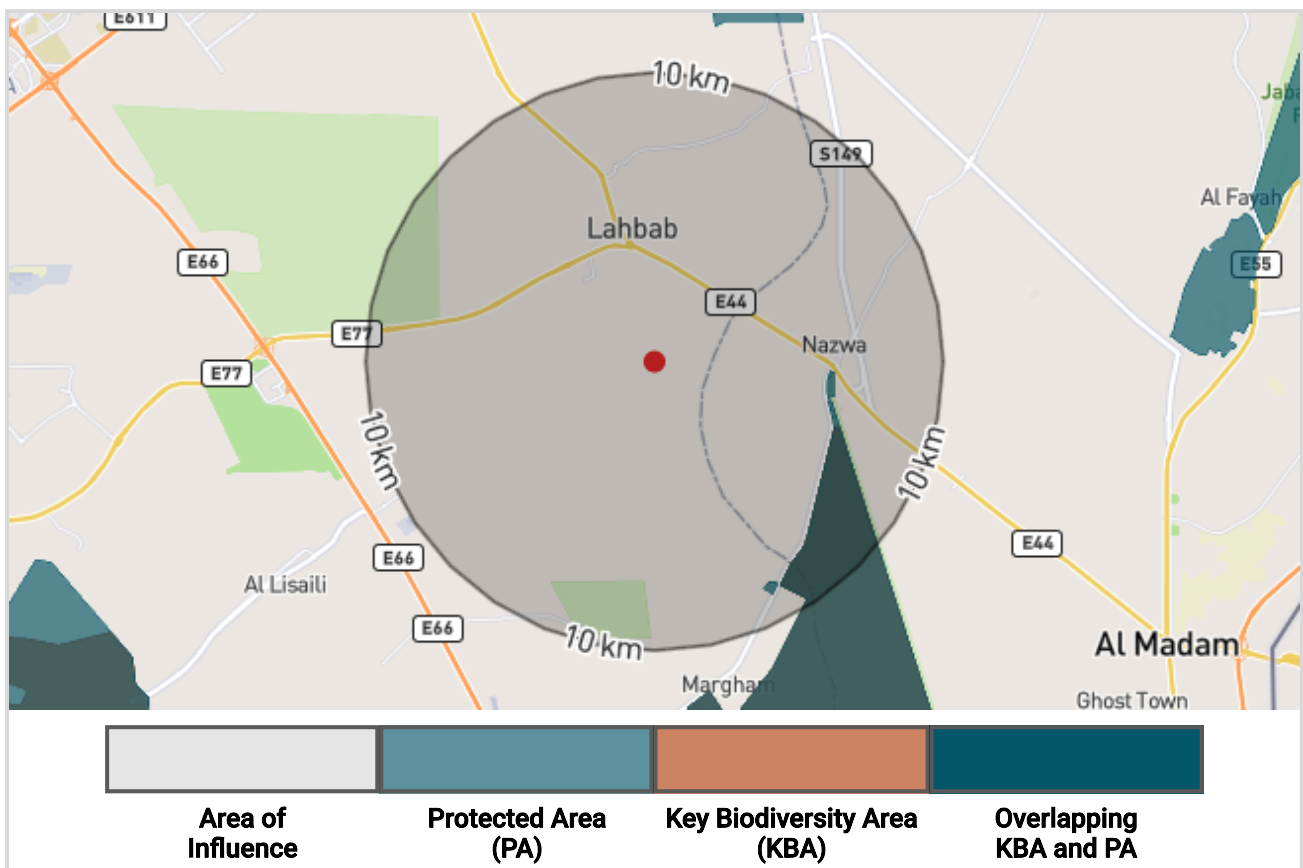
**Operation type:** Downstream

**In or near an ecologically sensitive location:** Yes

**Country:** United Arab Emirates

**Distance to nearest Protected Area or KBA:** 6.03 km

**Area of protected areas and KBAs within the Area of Influence:** 10.0 km<sup>2</sup>



**Figure 17.** Location of Dubai, UAE O&G Field. The Area of Influence (site and buffer) is shown in light grey. Protected areas (data from the World Database on Protected Areas) are shown in teal, Key Biodiversity Areas (data from the World Database of KBAs) are shown in dark orange, and areas where protected area and KBAs overlap are shown as the mix of both colours.

Dubai, UAE O&G Field is identified as in or near an ecologically sensitive location in relation to protected areas and KBAs. Overall, there are a total of 3 protected areas and 1 KBA within the Area of Influence (site and buffer).

Dubai, UAE O&G Field is not identified as a sensitive site for areas of biodiversity and conservation importance in relation to potential of species' extinction risk as the STAR scores for threat abatement and restoration are not above the threshold (global median/80th percentile).

**Site Name:** EU Distribution Centre

**Site Area:** This site has not been assigned any area since it has a no defined boundaries. We can only calculate area when sites have Polygon geometry.

**Buffer distance:** 5 km

**Site type:** Offices

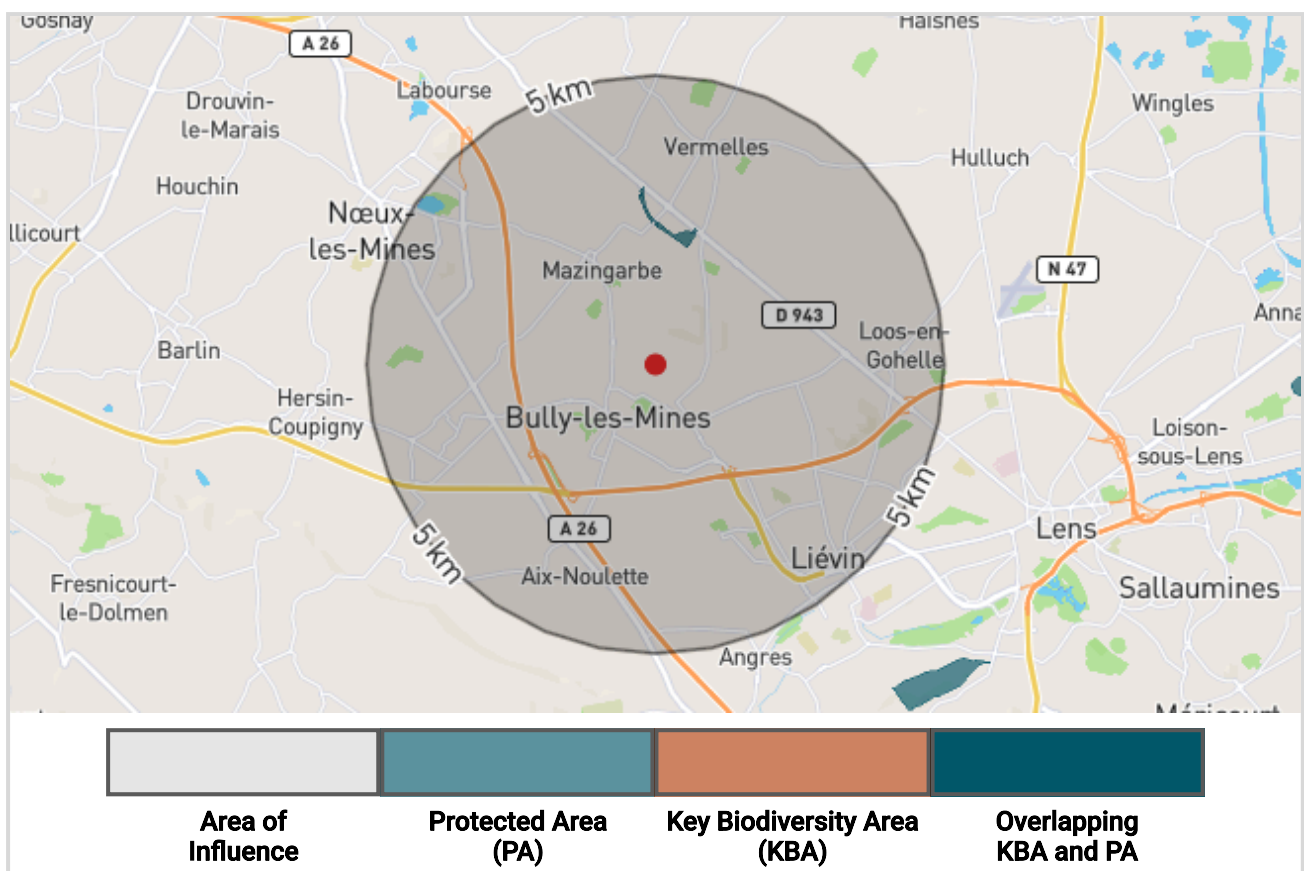
**Operation type:** Upstream

**In or near an ecologically sensitive location:** Yes

**Country:** France

**Distance to nearest Protected Area or KBA:** 2.1 km

**Area of protected areas and KBAs within the Area of Influence:** 0.12 km<sup>2</sup>



**Figure 18.** Location of EU Distribution Centre. The Area of Influence (site and buffer) is shown in light grey. Protected areas (data from the World Database on Protected Areas) are shown in teal, Key Biodiversity Areas (data from the World Database of KBAs) are shown in dark orange, and areas where protected area and KBAs overlap are shown as the mix of both colours.

EU Distribution Centre is identified as in or near an ecologically sensitive location in relation to protected areas and KBAs. Overall, there is a total of one protected area and 0 KBAs within the Area of Influence (site and buffer).

EU Distribution Centre is not identified as a sensitive site for areas of biodiversity and conservation importance in relation to potential of species' extinction risk as the STAR scores for threat abatement and restoration are not above the threshold (global median/80th percentile).